

Direct Current Motor RE40G



The advantages :
 Ideal for start/stop applications and sense of rotation
 reversal, Low power consumption,
 Exceptional power/dimensions ratio.

Associated products :

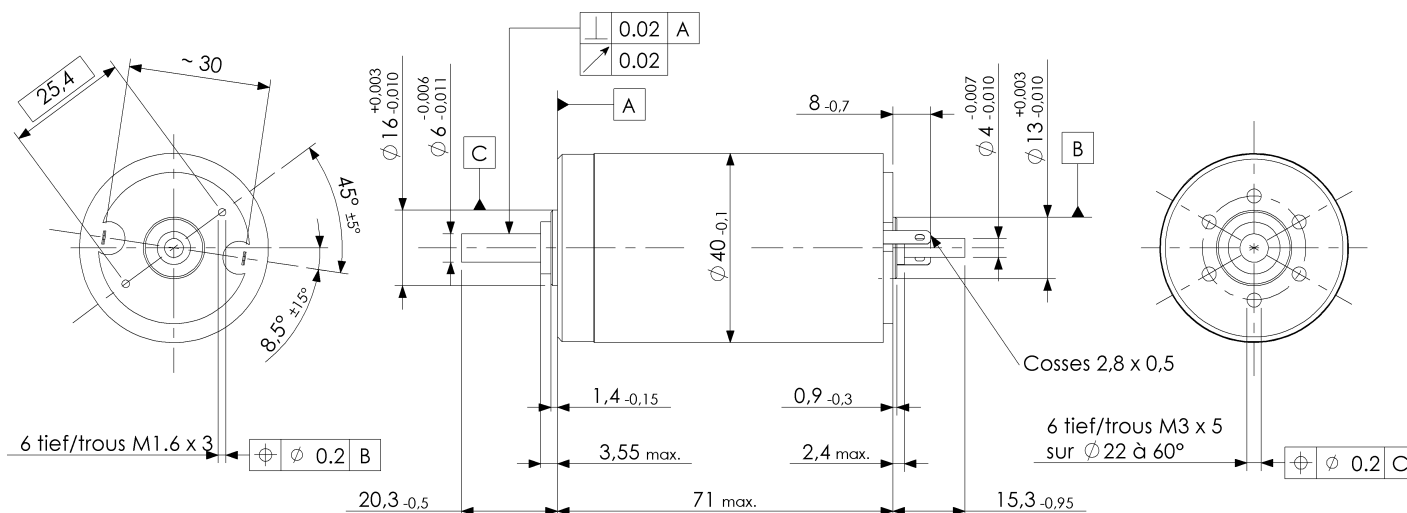
> **Power supply**
 DRP-240-24
 DRP-480S-24
 RS-150-24
 SP-320-24
 > **Controller**
 EPOS4 70/15

maxon motor

57 W - 214 W

Power supply voltage (Ua)	V	12	24
Speed at current In	tr/mn	3224	7014
Torque at current In	mNm	170	170
Max. permanent current (In)	mA	5770	5770
Ua no-load speed +/- 10%	tr/mn	3790	7580
No-load current +/- 50%	mA	137	137
Ua stall torque	mNm	1140	2280
Ua stall current	mA	37850	75700
Torque constant	mNm/A	30.2	30.2
Speed constant	tr/mn/V	317	317
Speed/torque gradient	tr/mn/mN	3.33	3.33
Limit speed	tr/mn	12000	12000
Max. Ua operating power output	W	113	452
Maximum efficiency	%	91	91
Electromechanical time constant	ms	4.81	4.81
Inertia	gcm ²	138	138
Resistance across terminals	Ohm	0.317	0.317
Inductance	mH	0.08	0.0823
Ambient/Housing thermal	K/W	4.65	4.65
Rotor/Housing thermal resistance	K/W	1.93	1.93

Commutation	Graphite
Number of commutator segments	13
Bearings	ball bearings
Magnets	Néodym Fer Bore
Maximum axial load (dynamic)	5.6 N
Minimum axial play	0.05 mm
Maximum axial play	0.15 mm
Maximum radial load	28 N
at a distance from the face of:	5 mm
Radial play	0.025 mm
Maximum slip force (static)	110 N
If fixed rear axis	1200 N
Min ambient operating temperature	-20 °C
Max ambient operating temperature	100 °C
Max rotor temperature	155 °C
Weight	480 g



Edition: Juli 2022 / subject to modification

Version of 06/07/2022